



इग्नू
जन-जन का
विश्वविद्यालय

IGNOU DIGI NEWS

2nd July 2022

RC- Bangalore

27th PROF. G RAM REDDY MEMORIAL LECTURE



The 27th Prof. G. Ram Reddy Memorial Lecture was held on 02.07.2022, at the Bangalore Regional Centre premises. Staff members of the Regional Centre and a few students were present.

The programme began with the Kulgeet of the University.

Dr. S. Radha, Sr. Regional Director welcomed and greeted the staff members & other guests on the occasion. She remembered the contributions made by Prof. Ram Reddy in the field of Open & Distance Education at both national and international levels.



Further, floral tributes were paid as a respect to the great visionary & Founder Vice-Chancellor of IGNOU, Prof. G. Ram Reddy.

— खुद रहें सुरक्षित, दूसरों को रखें सुरक्षित —



27th PROF. G RAM REDDY MEMORIAL LECTURE



— खुद रहें सुरक्षित, दूसरों को रखें सुरक्षित —



इग्नू
जन-जन का
विश्वविद्यालय

IGNOU DIGI NEWS

2nd July 2022

RC- Chennai

27th PROF. G RAM REDDY MEMORIAL LECTURE



— खुद रहें सुरक्षित, दूसरों को रखें सुरक्षित —



इग्नू
जन-जन का
विश्वविद्यालय

IGNOU DIGI NEWS

2nd July 2022

RC- Chennai

27th PROF. G RAM REDDY MEMORIAL LECTURE



— खुद रहें सुरक्षित, दूसरों को रखें सुरक्षित —

27th PROF. G RAM REDDY MEMORIAL LECTURE



On the occasion of 27th Prof. G. Ram Reddy Memorial Lecture, IGNOU Regional Centre, Shimla organized a Lecture on the topic “Cautions of using Digital Media Platforms in the Present Scenario” on 2nd July, 2022. Prof. Aman Sharma, Department of Computer Science, Himachal Pradesh University, Shimla was the Guest of Honour and delivered a lecture on this occasion. Prof. Sharma apprised about various cautions to be taken care all of us while making the use of information technology. All the Staff members of RC Shimla were present and also interacted with the Guest



— खुद रहें सुरक्षित, दूसरों को रखें सुरक्षित —



इग्नू IGNOU DIGI NEWS

जन-जन का विश्वविद्यालय

2nd July 2022

RC- Vijaywada

27th PROF. G RAM REDDY MEMORIAL LECTURE



D.No:11-15-16, Vinnakota Vari St, opp. Reliance Fresh, Islampet, Vijaywada, Andhra Pradesh 520001, India

Vijaywada

Andhra Pradesh

India

2022-07-02(Sat) 10:56(am)

34°C

93°F

— खुद रहें सुरक्षित, दूसरों को रखें सुरक्षित —



इग्नू IGNOU DIGI NEWS

जन-जन का विश्वविद्यालय

2nd July 2022

RC- Visakhapatnam

27th PROF. G RAM REDDY MEMORIAL LECTURE



— खुद रहें सुरक्षित, दूसरों को रखें सुरक्षित —



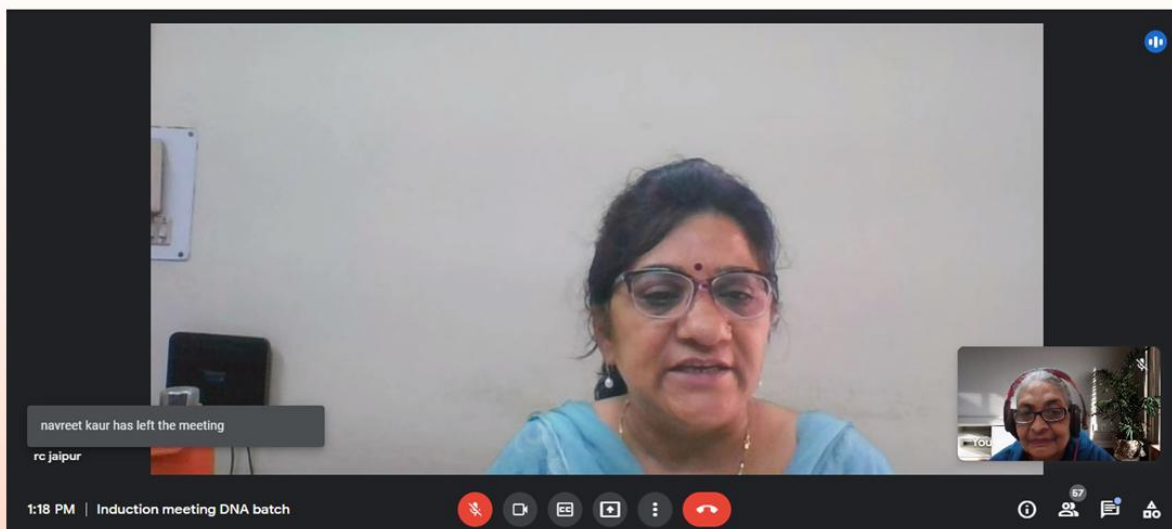
इग्नू
जन-जन का
विश्वविद्यालय

IGNOU DIGI NEWS

26th June 2022

RC- Jaipur

Online Induction meeting



An Online Induction meeting for DNA programme for January 2022 session learners was organized through Google Meet. Dr. Neerja Sood, Assistant Professor, School of Health Sciences, Dr. Laxmi, Programme Coordinators, SOHS, Dr. Mamta Bhatia, Regional Director, Dr. Indu Ravi, Assistant Regional Director, Dr. B.L. Sharma, Programme In-Charge, Dr. Samta Soni, Assistant Programme In-Charge, Nodal Centre PSC 2316, Govt. College of Nursing, Jaipur were also present in the meeting. Dr. Samta Soni, APIC gave a presentation on the objective of the programme, structure of the programme, role of the Study Centre, Practical Classes and Theory classes. All queries of the Learners are resolved by the Experts.

— खुद रहें सुरक्षित, दूसरों को रखें सुरक्षित —



इग्नू IGNOU DIGI NEWS

जन-जन का विश्वविद्यालय

26th June 2022
RC- Jaipur



1:17 PM | Induction meeting DNA batch

IGNOU SC 2316 is presenting

S. No.	Title	Course Code	Credits	No. of Books	No. of Assignments	Counseling Sessions	Self Study Hours
1	Principles and Practices of Nursing Administration	BN2311	4	4	2	12	108
2	Management of Educational Institutions/Healthcare Community	BN2312	4	4	2	12	108
3	Group Dynamics	BN2313	4	4	2	12	108
4	Resource Management	BN2314	4	4	2	12	108

Counseling sessions will be held in programme study centers. 75 percent attendance is compulsory.
Assignment can be downloaded from IGNOU web site.
Submission of assignment is compulsory before theory term end examination.

1:32 PM | Induction meeting DNA batch

In-call messages

Messages can only be seen by people in the call and are deleted when the call ends

07:Delhi

Ambica Singh 1:32 PM
Ambica kumari RC- Patna

Sanjay Meena 1:32 PM
Sanjay kumar meena
Enrollment 2201865674
Rc Jaipur

Jyotsna Dhar 1:32 PM
I can not able to login in samarth to download Id card

Send a message to everyone

1:34 PM | Induction meeting DNA batch

IGNOU SC 2316 is presenting

S. No.	Title	Course Code	Credits	No. of Books	No. of Assignments	Counseling Sessions	Self Study Hours
1	Practical Aspects of Nursing Administration	BN2311	5	1	7	45	135
2	Practical Aspects of Nursing Administration	BN2312	5	1	8	40	135

Practical contact sessions will be conducted in hospitals/PSC. 90 percent attendance is compulsory.
Supervised activities will be conducted at PSC/ attached hospital under supervision.
Self activities are carried out at your work place or hospital.
Submission of self and supervised activities file or log book is compulsory before final practical examination.

1:34 PM

In-call messages

Messages can only be seen by people in the call and are deleted when the call ends

Name of PSC for students from Patna RC

Juin DuttaGhosh 1:34 PM
Any dress code for practical?
Any accommodation facility in clg campus premises for outer students ?
Pls notify the practical exam schedule atleast 15day before, other wise leave can't sanctioned by our authority.

kumari sheela 1:34 PM
Kumari Sheela Staff Nurse Vims Pawapuri Nalanda Bihar

Send a message to everyone

— खुद रहें सुरक्षित, दूसरों को रखें सुरक्षित —



इग्नू
जन-जन का
विश्वविद्यालय

IGNOU DIGI NEWS

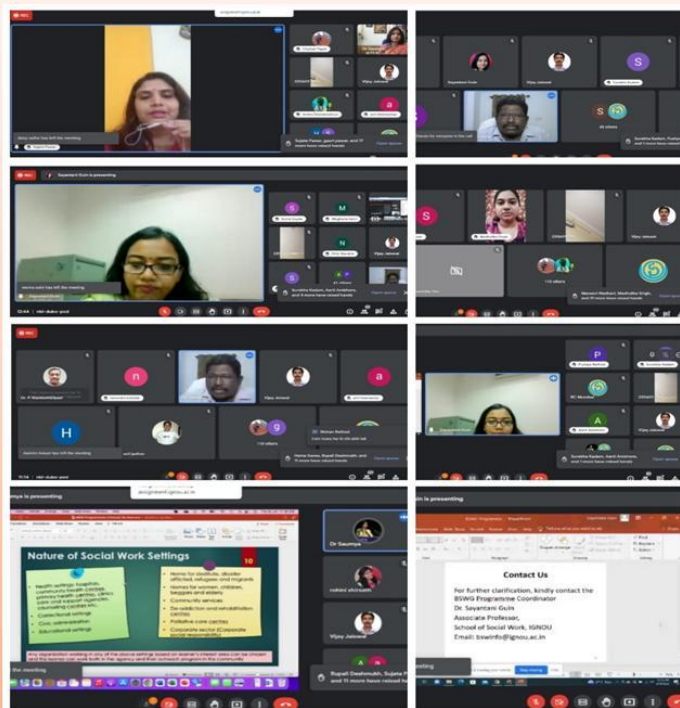
2022/IG/PIU/DiNews/Jul/1249

30th June 2022

RC- Mumbai

Online Orientation Programme

The Regional Centre Mumbai has organized an online Orientation Programme for BSWG/MSW/MSWC Learners Social Work Practicum, Block Placement, Internship and Project on 30.06.2022 at 11AM through Google meet with the collaboration of School of Social Work, IGNOU, New Delhi



Dr. P Namboothiripad, Asst. Regional Director welcomed the resource persons and the learners for the session.

Dr. E. Krishna Rao, Regional Director (i/c) gave his initial remarks and welcomed the resource person. Regional Director (i/c) updated the learners about the latest achievements of the university and about the admissions of the July 2022 session. He further pointed out that the IGNOU has given so many responsibilities by the Ministry of Education, Government of India, accordingly as per the directions of Hon'ble Vice Chancellor in the lines of NEP 2020 IGNOU has introduced so many skill based and employment oriented programmes for the benefit of prospective learners and existing learners. Since the UGC also notified the approval of simultaneous degree all the existing learners can use the facility and earn additional degrees for a bright future and more employment opportunities. He urged all the learners to act as IGNOU Brand Ambassadors and promote the IGNOU at the grass root level for the benefit of society. The learners were assured by the Regional Centre for better Student Support Services at all times.

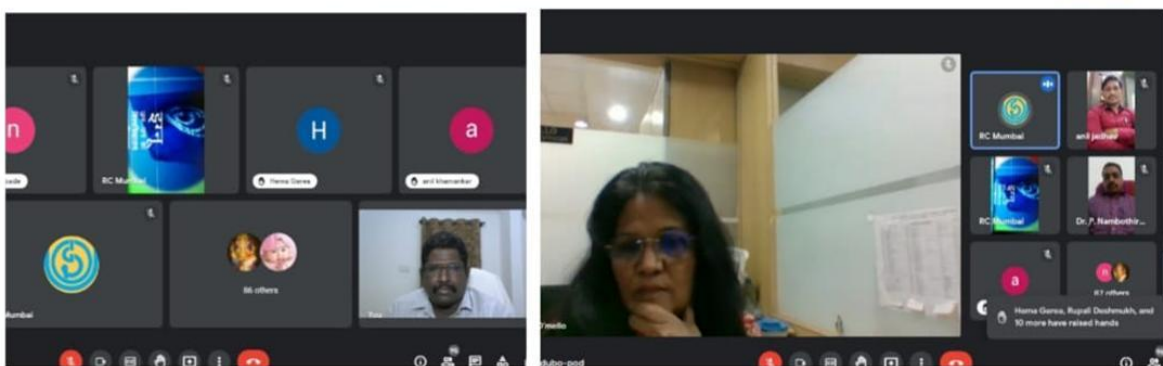
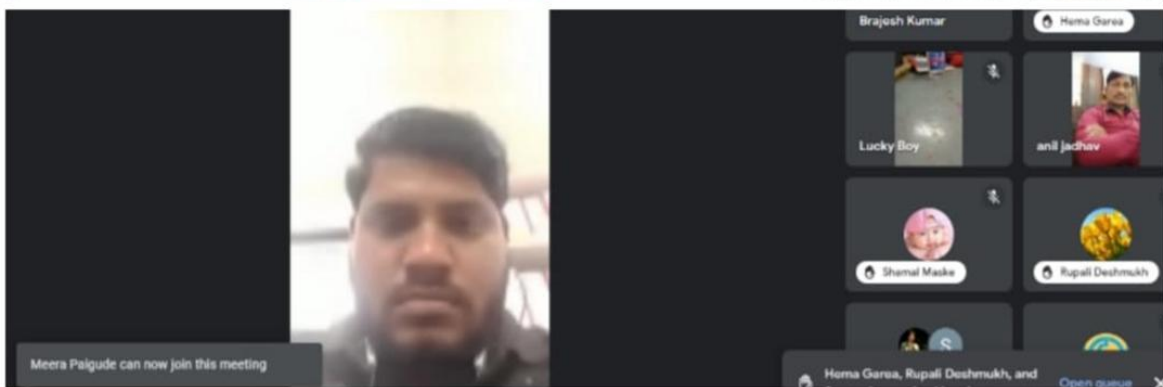
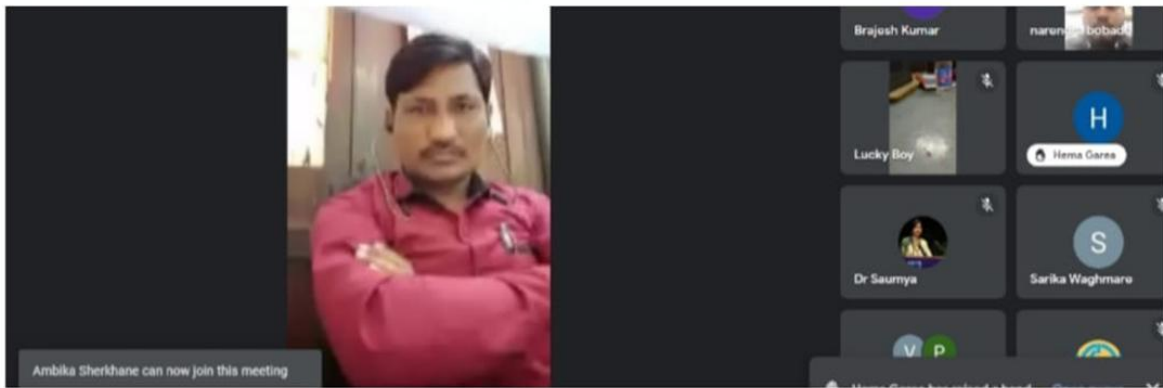
— खुद रहें सुरक्षित, दूसरों को रखें सुरक्षित —



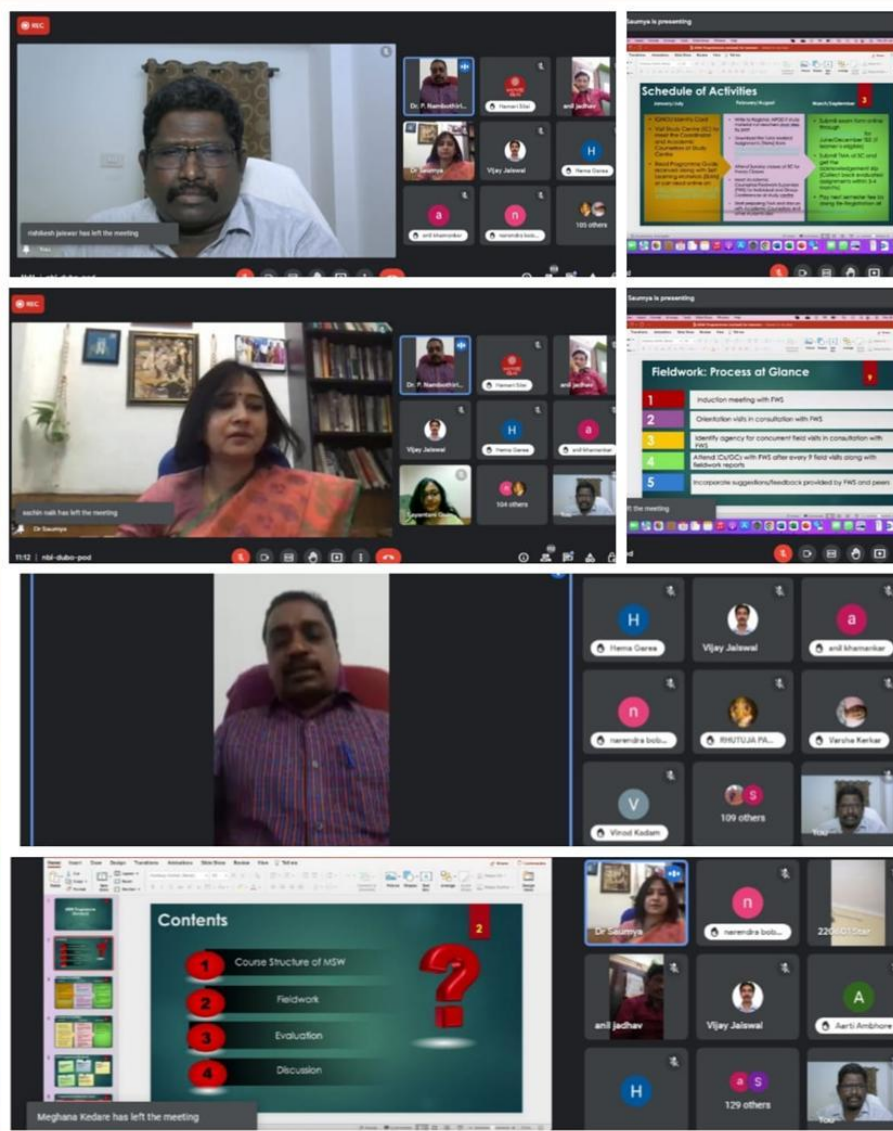
इग्नू IGNOU DIGI NEWS

जन-जन का विश्वविद्यालय

30th June 2022
RC- Mumbai



— खुद रहें सुरक्षित, दूसरों को रखें सुरक्षित —



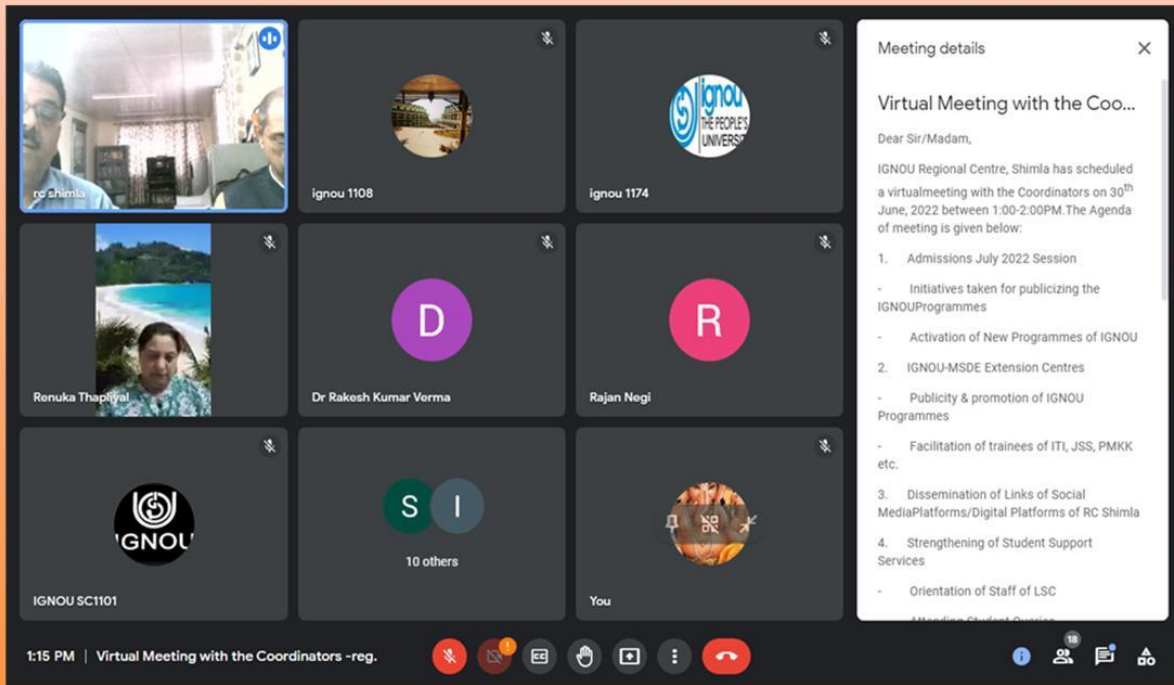
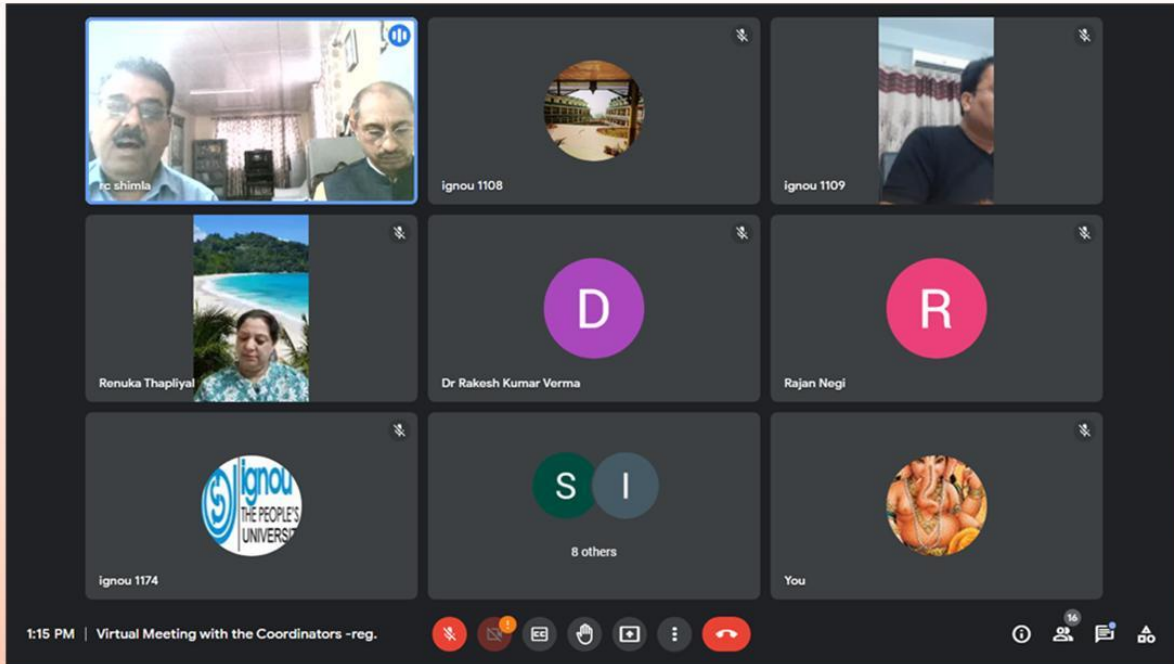
This session was attended by more than 160 students and 25 Academic Counsellors from RCs Mumbai, Nagpur and Pune. The student queries/ doubts have been clarified and answered by the Regional Director (i/c) and School of Social Work faculty. Positive feedback has been received from the students as well as academic counselors who attended this orientation programme.

Ms. Malvika Ambasta, Academic Counsellor proposed Vote of Thanks and the technical support has been rendered by Mr. Shashank Tripathi and Mr. Abhishek Sawant, RC Mumbai staff.

— खुद रहें सुरक्षित, दूसरों को रखें सुरक्षित —



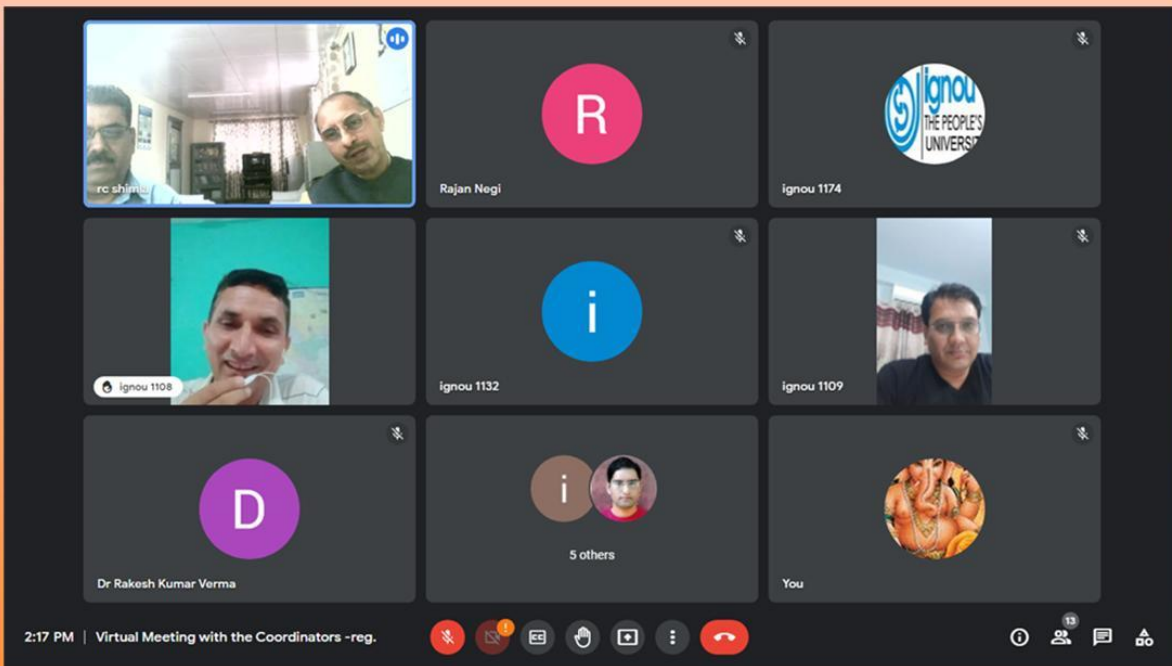
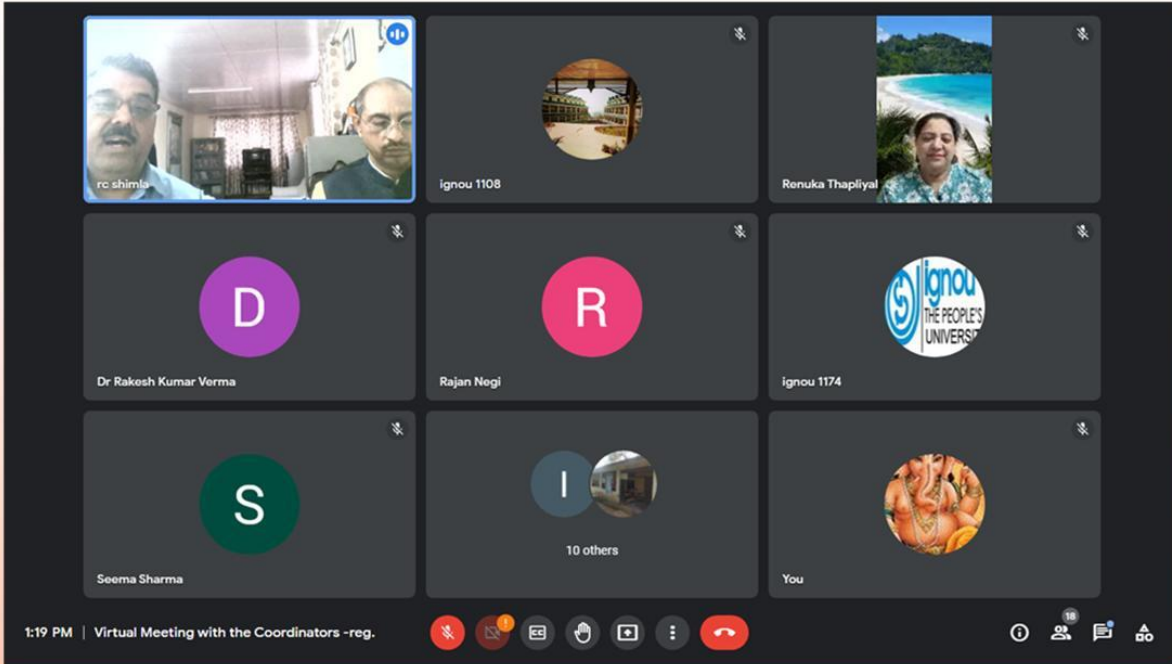
Coordinator Meeting



— खुद रहें सुरक्षित, दूसरों को रखें सुरक्षित —



Coordinator Meeting



— खुद रहें सुरक्षित, दूसरों को रखें सुरक्षित —